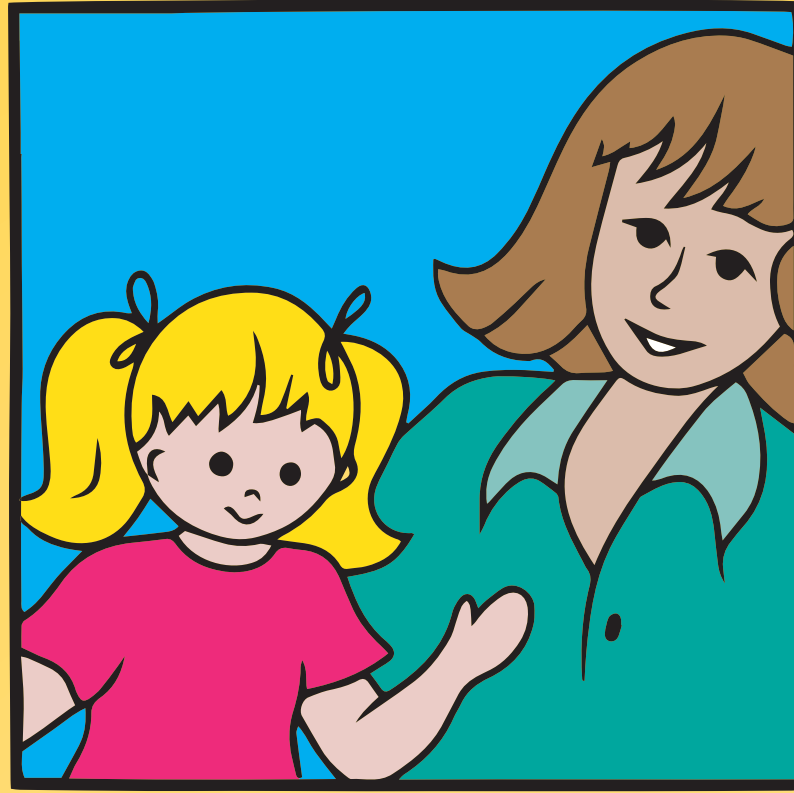


I Don't Play With MATCHES

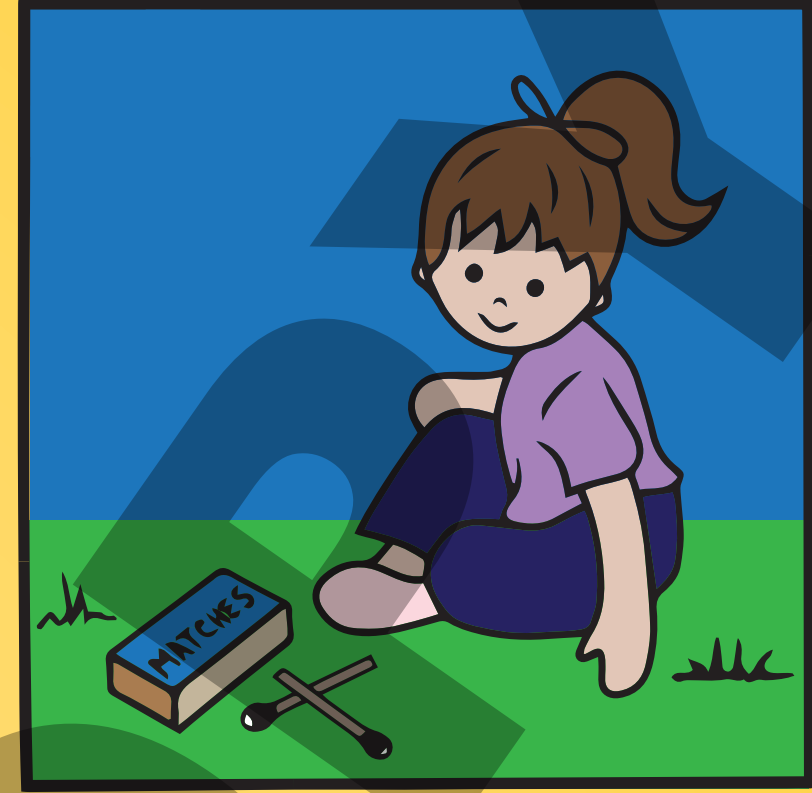
Matches and Lighters are Tools **NOT** Toys!



Never play with matches or lighters. They are not safe for children.

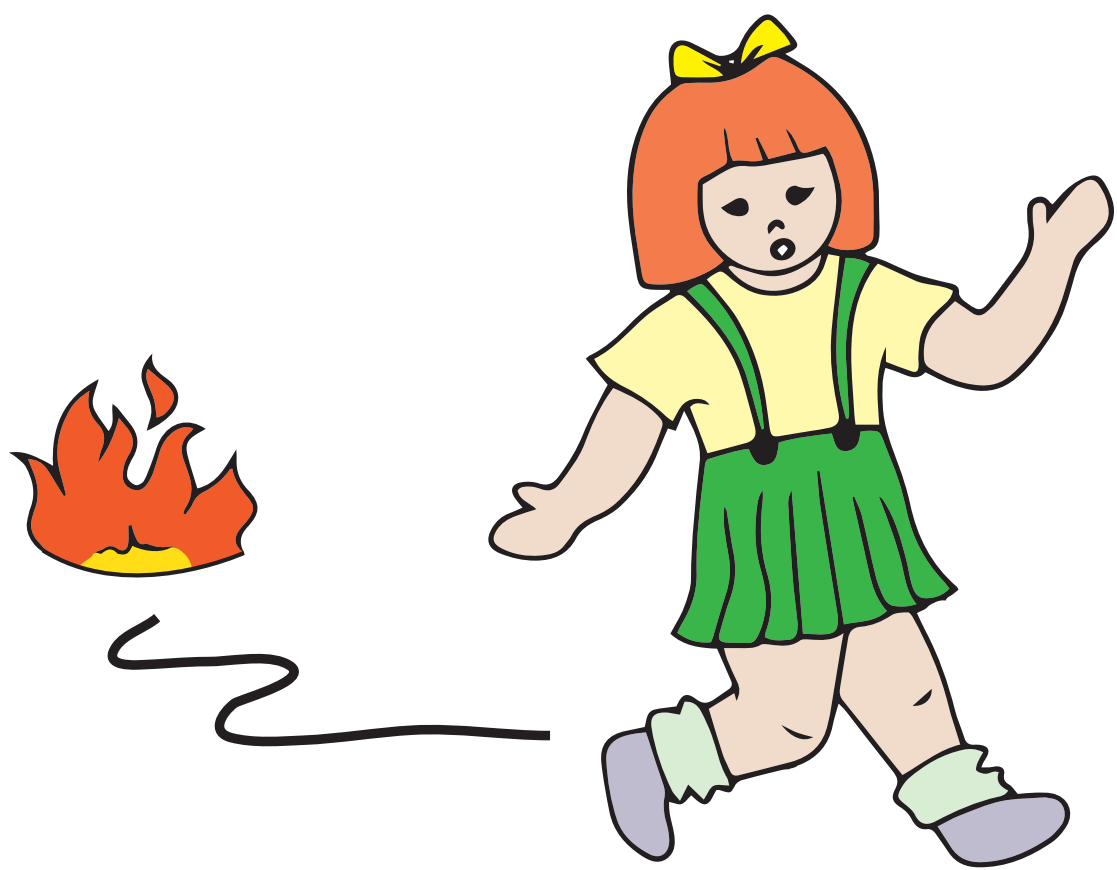


If you find matches or a lighter, don't touch them, leave them alone and find an adult



If you see another child playing with matches tell a grown up

FIRE Can Get **BIG**
Very **FAST**



If you see a fire, tell a grown-up right away.

FIRE is **DANGEROUS** inside and outside

A building can burn down in just minutes. One match can set an entire room on fire in **TWO** minutes. A whole house in **FIVE**.



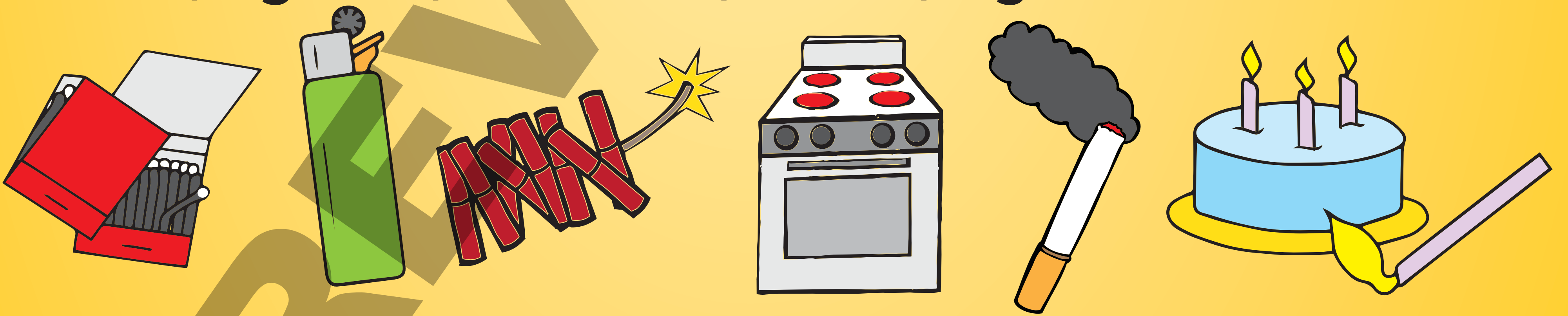
Burning leaves or grass can cause forest fires and damage nearby buildings.

FIRE is **HOT**
you could get burned!



Playing with fire is dangerous. You can burn yourself, hurt others or damage important things like homes or forests.

Most Fires Set by Children Happen When Kids Play With: Matches, Lighters, Fireworks, Stoves, Cigarettes and Candles



**Fire Questions?
Ask a Firefighter!**

Firefighters are here to help you and are our friends. If you have any questions about fire ask a firefighter.

Stay Safe. Stay Away From Matches and Lighters!