

# I Don't Play With MATCHES

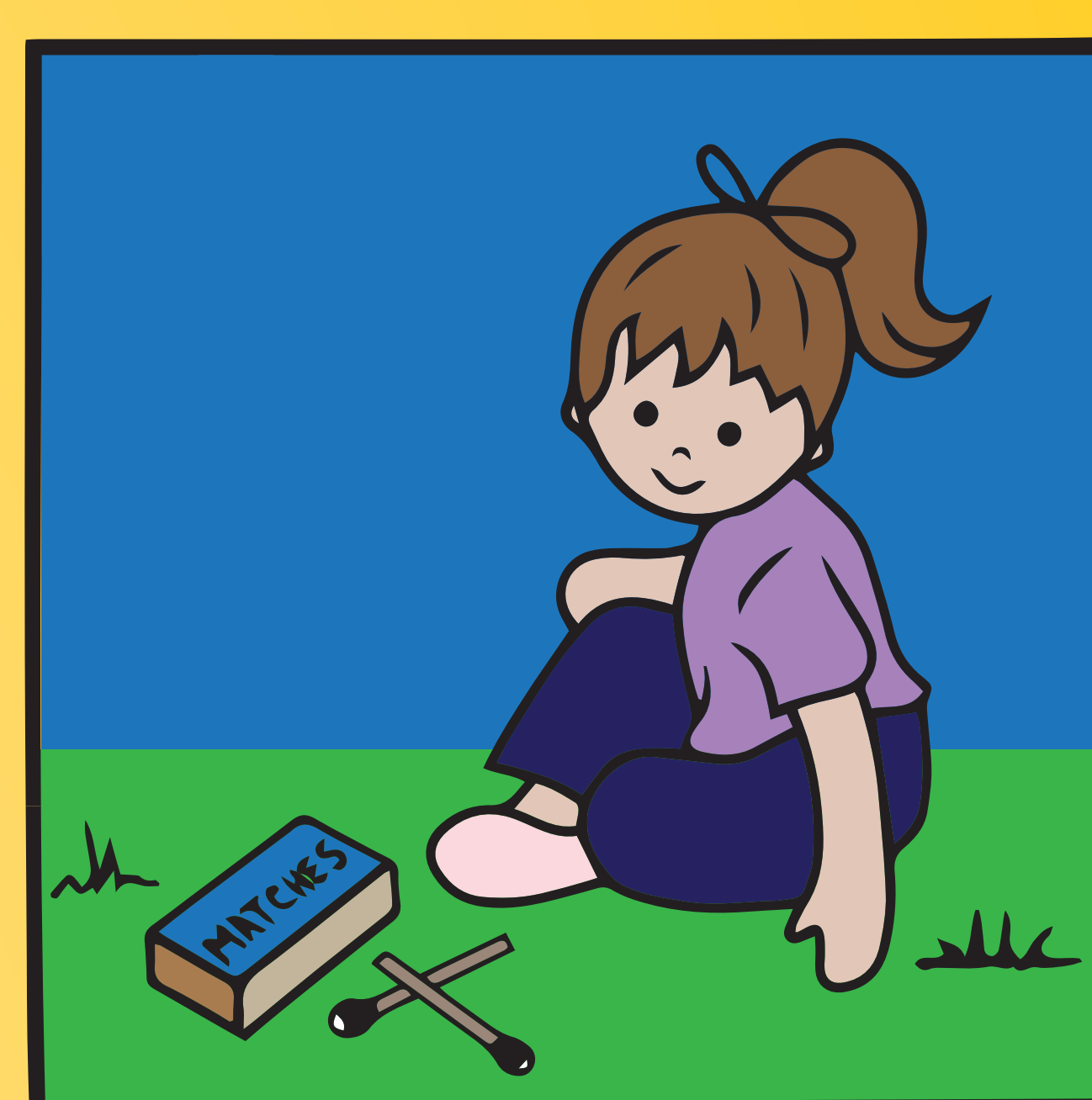
Matches and Lighters are Tools **NOT** Toys!



Never play with matches or lighters. They are not safe for children.

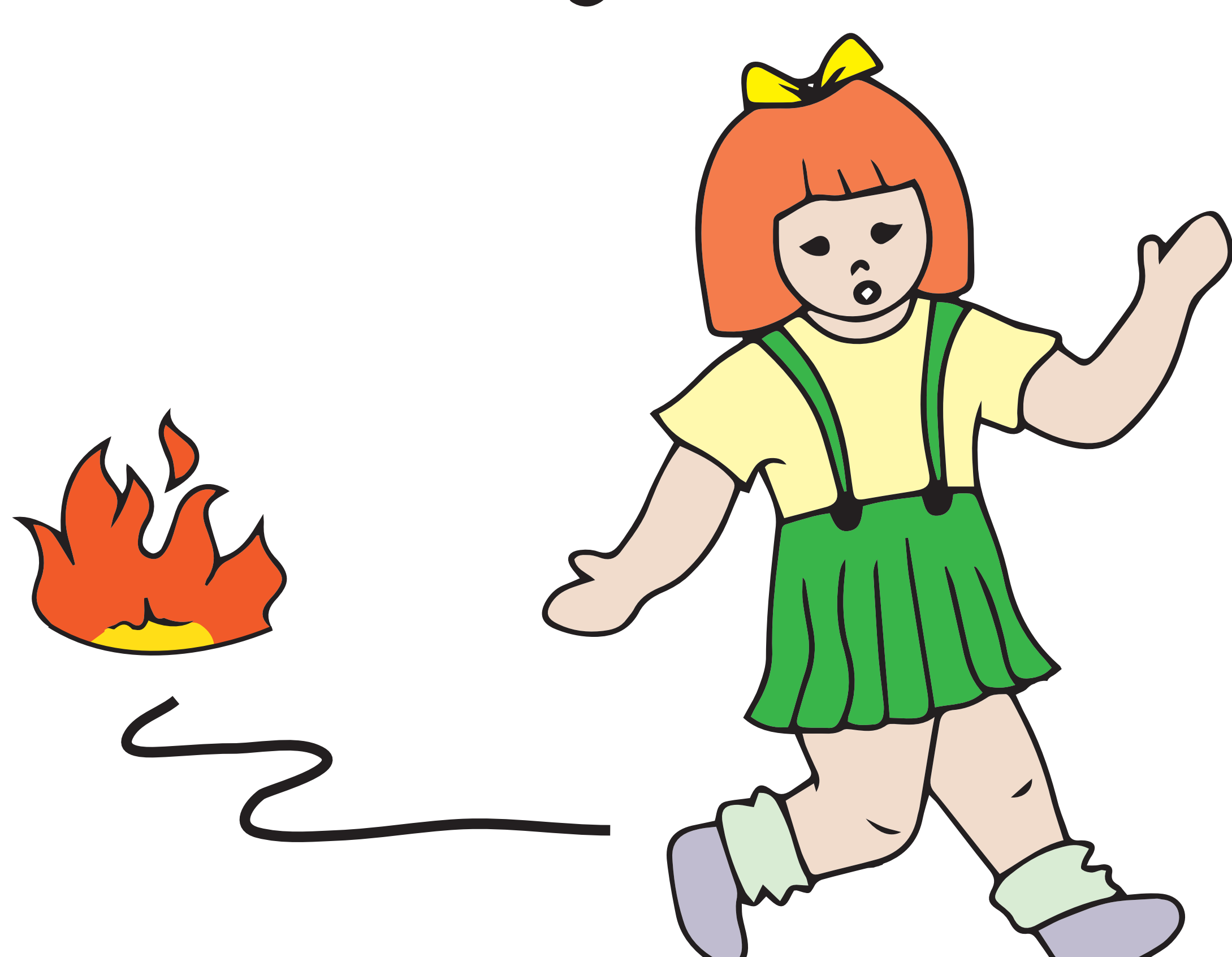


If you find matches or a lighter, don't touch them, leave them alone and find an adult



If you see another child playing with matches tell a grown up

**FIRE** Can Get **BIG** Very **FAST**



If you see a fire, tell a grown-up right away.

**FIRE** is **DANGEROUS** inside and outside

A building can burn down in just minutes. One match can set an entire room on fire in **TWO** minutes. A whole house in **FIVE**.



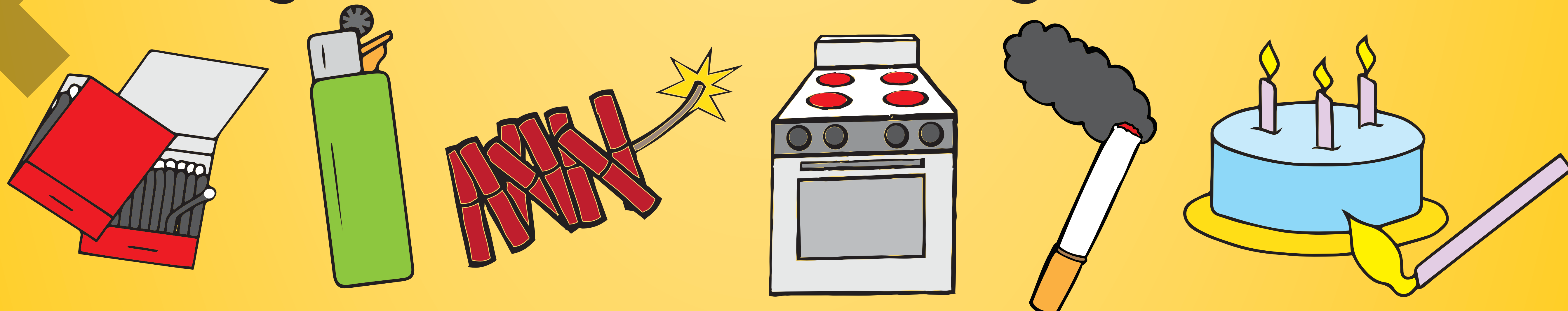
Burning leaves or grass can cause forest fires and damage nearby buildings.

**FIRE** is **HOT** you could get burned!



Playing with fire is dangerous. You can burn yourself, hurt others or damage important things like homes or forests.

**Most Fires Set by Children Happen When Kids Play With: Matches, Lighters, Fireworks, Stoves, Cigarettes and Candles**



**Fire Questions?**  
**Ask a Firefighter!**

Firefighters are here to help you and are our friends. If you have any questions about fire ask a firefighter.

**Stay Safe. Stay Away From Matches and Lighters!**