

I Don't Play With MATCHES

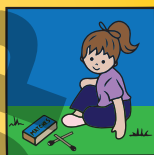
Matches and Lighters are
Tools **NOT** Toys!



Never play with matches or lighters. They are not safe for children.



If you find matches or a lighter, don't touch them, leave them alone and find an adult



If you see another child playing with matches tell a grown up

FIRE Can Get **BIG**
Very **FAST**



If you see a fire,
tell a grown-up
right away.

FIRE is **DANGEROUS**
inside and outside

A building can burn down in just minutes. One match can set an entire room on fire in **TWO** minutes. A whole house in **FIVE**.



Burning leaves or grass
can cause forest fires and
damage nearby buildings.

FIRE is **HOT**
you could get burned!



Playing with fire is dangerous. You can burn yourself, hurt others or damage important things like homes or forests.

**Most Fires Set by Children Happen When Kids Play With:
Matches, Lighters, Fireworks, Stoves, Cigarettes and Candles**



**Fire Questions?
Ask a Firefighter!**

Firefighters are here to help you and are our friends.
If you have any questions about fire ask a firefighter.

**Stay Safe. Stay Away From
Matches and Lighters!**